



Dear Parents/Carers,

As you know, we have been encouraging healthy eating at Mundella over the last year and, with your help, I am really pleased to see that most pupils are forming good habits and enjoying a balanced packed or school lunch and avoiding treats and sweets on the playground.

I want to make you aware that, from September, we want you to support us by strictly adhering to expectations. I would also like to share with you why. Of course we want our pupils to grow healthily, learn good habits and maintain them beyond primary school and on to adulthood. The information collected over the last three years gives a pretty worrying picture of where things may be heading.

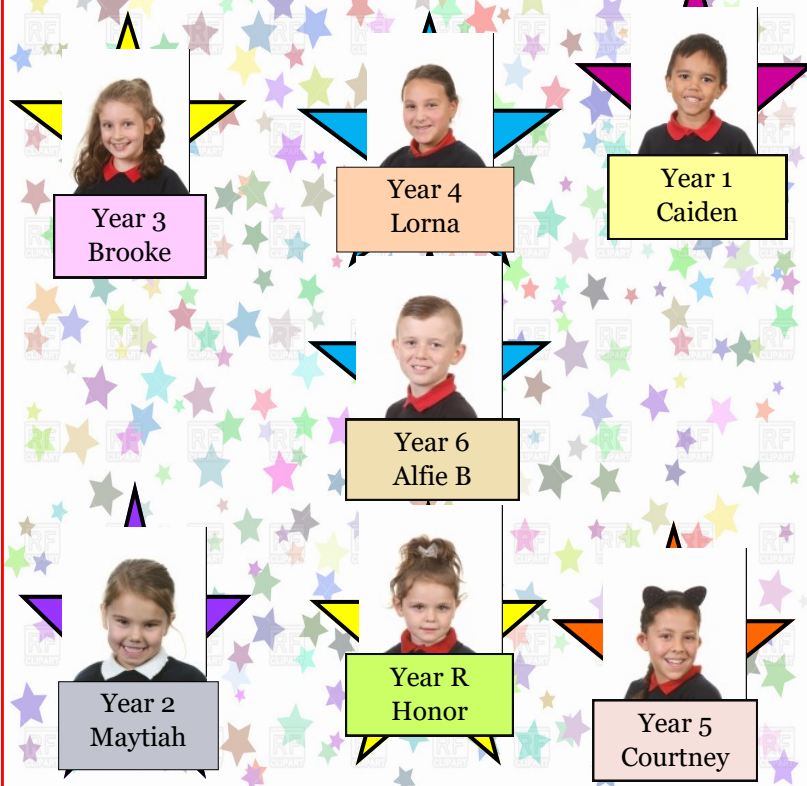
| | Overweight | Obese | Combined |
|-----------------|-------------------------|-------------------------|-------------------------|
| National | | | R - 22% Y6 - 34% |
| Kent | | | R - 23% Y6 - 33% |
| Mundella | R - 17% Y6 - 21% | R - 12% Y6 - 24% | R - 29% Y6 - 45% |

In no way are these figures intended to point fingers at individuals or families but they do, however, clearly show us that we cannot rest and need to be doing more to develop a lifelong understanding of the importance of eating healthily. Thank you, in advance, for your continued support.

MR F.E. Westmorland

Well done to our Stars this week!

These children have impressed their class teachers in some way during this week, well done to all of them!



Punctuality Pup and Attendance Ted!



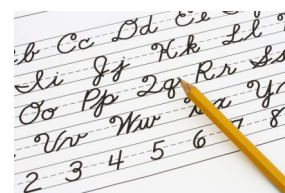
Well done to Donaldson Class this week with a fantastic 97.3% attendance they are the proud keepers of Ted!



Pup will go to Year 5 this week with the fewest late marks– **Well done Shakespeare!**

~Most Improved Writers~

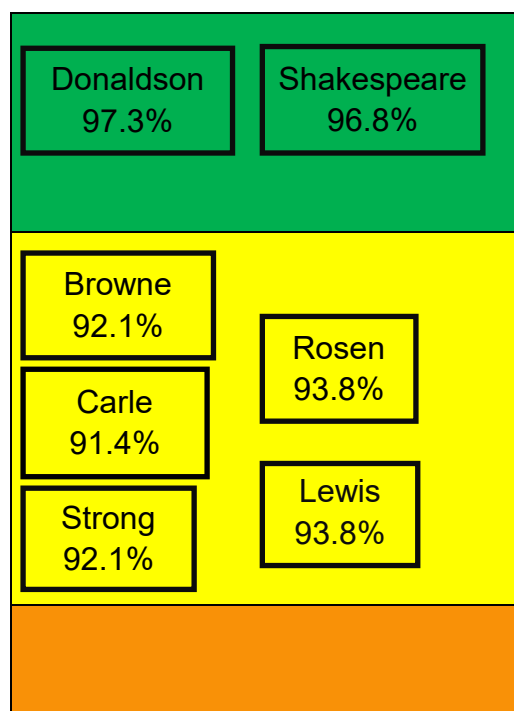
Year R-Isabella
 Year 1- Benjamin
 Year 2-Clayton
 Year 3-Scarlot
 Year 4-Freddie
 Year 5-Kaiden
 Year 6- Richard



Well Done!

Attendance

Well done to the classes with over 95% attendance, hopefully we will see more in green next week!



Census Day Menu

The special census day menu will be on Thursday 16th May and will be:

BBQ Lunch

Pork Sausage Hotdog in a Roll
Quorn Sausage Hotdog in a Roll
served with Tomato Sauce.
Jacket Wedges, Coleslaw & Sweetcorn
Jelly & Fruit



Folkestone Library Pebble Workshop

There will be a free drop in pebble painting workshop on Saturday 11th May from 10am—2pm with East Cliff Creatives. These pebbles will be painted in preparation for their Lasting Memories project— an ambitious art and heritage project centred around the creation of seven giant poppies on the beaches of Folkestone at the end of June 2019. The poppies will be created from around 20,000 Folkestone pebbles. Each pebble will be painted using eco-friendly paint by members of the community, both young and old. For more information please visit: <https://eastcliffcreatives.com/lasting-memories-beach-poppies/>



Reminders

- The year 2 trip to the RNLI trip is on the 23rd May. The payment of £3.50 needs to be made by the 18th May.
- The year 3 trip to Wingham will be on the 22nd May. Please pay the for the trip either via Paypoint or online.
- All our uniform stockists are now stocking the school uniform cardigans.

Change for Change

Mrs Earl is part of a project to build a school in Burkina Faso and is raising money to buy solar lamps so that the children can do their homework as they have no electricity. Each lamp costs £10. All classes will have a jar in their room to collect loose change which will be counted at the end of each term. It's called Change for Change.



Kent Test Applications

All Kent test applications must be made by parents and completed by **Wednesday 3rd July 2019** whilst the pupils are still in Year 5. If you do not complete the application then they will not be able to complete the test and apply for grammar schools. The applications will open on the 3rd June.



Year R Acceptance Forms

Please remember to hand in your acceptance/refusal form for September 2019 Year R places by Monday 13th May. If you need any help printing the form then please come and see the office and we can help.