

Dear Parents/Carers,

The two terms before Christmas are often the longest ones and with the days getting shorter they feel longer still. The routines for our children can always be more challenging, with wet weather and darker mornings but routines are the best way to maintain happy families and classes.

As we work our way towards half term the weather is going to be mixed and the likelihood of rain increased therefore it is really important for children to come to school with a waterproof jacket. We will always try to avoid pupils becoming sodden but we encourage a little fresh air as long as the rain isn't more than a heavy mist.

In the same vein, we will always try to ensure that pupils can come into school quickly on a morning, should the weather be inclement, but we will only let them in if there is a teacher to supervise them in the classrooms. I am sure that you will appreciate this but please accept my apologies, in advance, should there be occasions that they get a little soggy.

Here's to a fine weekend

Mr F.E Westmorland

### Well done to our Stars this week!

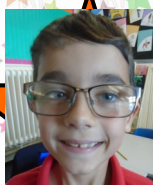
These children have impressed their class teachers in some way during this week, well done to all of them!



Year 1  
Annalise



Year 2  
Elsie



Year 3  
Toby



Year 4  
Ella



Year 5  
Freddie



Year 6  
Tiffany

### Punctuality Pup and Attendance Ted!



Well done to Fletcher in KS1 with 95.5% attendance and Walliams in KS2 with 97.4%, they are the proud keepers of Ted!



Pup will go to Donaldson and Shakespeare this week with the fewest amount of late marks—

**Well Done!**

### *~Most Improved Writers~*

Year 1- Annalise

Year 2- Jason

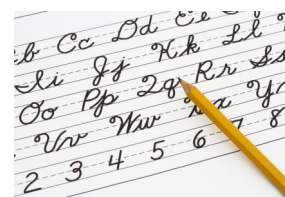
Year 3- Marley

Year 4- Alice

Year 5- Jesse

Year 6- Courtney

*Well Done!*



Year	Good to be Green	Attendance 23/09 to 27/09
		<b>100%</b>
<b>Donaldson</b>	16/18	15/18
<b>Fletcher</b>	25/28	21/28
<b>Kerr</b>	19/28	21/28
<b>Walliams</b>	25/29	25/28
<b>Morpurgo</b>	25/28	24/28
<b>Shakespeare</b>	25/29	22/29
<b>Cowell</b>	25/26	19/26

### Reminders

- ◆ With the cold and wet weather on its way, please make sure your child has a warm coat to bring into school.
- ◆ On Wednesday 2nd October Year 2 will be going to the Natural History museum in London. Please return the permission slip and make the payment of £10 if you haven't already.
- ◆ Please remember to bring in your data collection sheets by Wednesday 2nd October.



### Year 3 Wingham Wildlife Trip

Year 3 had an excellent time at Wingham on Wednesday spotting carnivores and herbivores as part of their topic. They got to excavate some dinosaur bones and they went

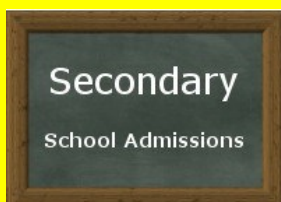


for a walk through the lemur enclosure.



### Year 6 Secondary School Applications

Please note that all secondary school applications must be made by midnight on the 31st October 2019. Please apply online at <https://www.kent.gov.uk/education-and-children/schools/school-places>



There will be a Messy Church session on Sunday 13th October from 3:00pm onward at St. Luke's Lighthouse Church in Hawkinge. There will be the opportunity to take part in arts and crafts, singing and games. All are welcome and there will be a free buffet supper.